



Welcome

**The Asthma
Center**

Allergic Disease Associates, PC

Specializing in Asthma,
Allergy, Immunology
and Non-Surgical
Sinus Disorders

WELCOME TO OUR PRACTICE

The specialists and staff of **The Asthma Center/**

Allergic Disease Associates, PC

welcome you to our practice. We specialize in the treatment of adult and pediatric allergy, asthma, disorders of the immune system, non-surgical sinus disease and allergic skin disorders.

Our goals are to:

- Provide outstanding care within our specialty, utilizing the most sophisticated evaluation methods and state-of-the-art treatment options.
- Afford our patients easy access to our specialists.
- Maintain excellent communication between patients, physicians, and staff.
- Provide comprehensive patient education.
- Provide quick responses to medical emergencies within our field of expertise.

We have created a comfortable and professional environment for our staff and patients. We have trained and encouraged our staff to be efficient and supportive of our patients' needs.



W WHAT IS AN ALLERGIST AND IMMUNOLOGIST?

The specialists in our group have completed four years of medical school, three years of residency in either Internal Medicine or Pediatrics, and two or more years of specialized training in Allergy and Immunology at leading medical institutions. After training, they are certified by the American Board of Allergy and Clinical Immunology, as well as by either the American Board of Internal Medicine or Pediatrics.

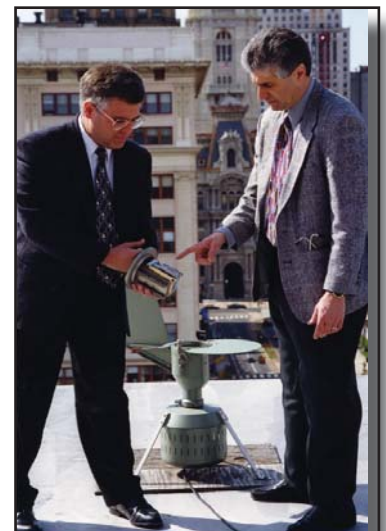
We treat patients suffering from: allergic disorders of the eyes, nose, throat and sinuses; asthma and other lung diseases such as chronic obstructive pulmonary disease (COPD); allergic skin disorders (poison ivy, eczema, hives, etc.); and disorders of the immune system (frequent infections). We also

evaluate and treat patients with drug allergy, nasal polyps, insect stinging reactions; food allergy, and allergy to materials in the work environment.

Over the past two decades, we have developed an outstanding program providing in-depth evaluation of all types of asthma. Our program includes a highly specialized pulmonary function laboratory, a very strong asthma education program and quick access to our specialists in the event of an asthma-related emergency. When our patients experience acute symptoms of asthma, they can easily and quickly contact our specialists, even at night or on weekends.

P POLLEN AND MOLD SPORE COUNTS

The Asthma Center is the only accredited pollen and mold spore monitoring station for the American Academy of Allergy, Asthma & Immunology serving metropolitan Philadelphia. Local air samples of pollen and mold spores are collected



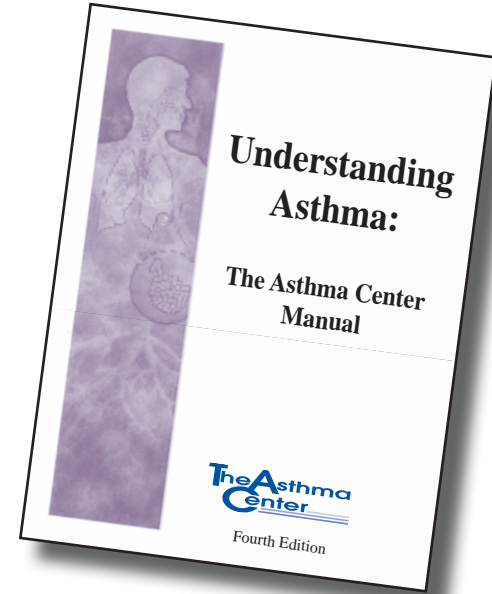
continued

using sophisticated collection equipment. Evaluation of these samples is performed by one of our pollen/mold spore certified allergists, and the counts are reported Monday through Friday. You can obtain our pollen and mold spore counts directly from The Asthma Center by accessing our web site, www.asthmacenter.com, visiting us on Facebook, or calling our toll-free number: 1-800-4-POLLEN (1-800-476-5536). We also report our data to local TV, radio, newspapers and national allergy services.

U **UNDERSTANDING ASTHMA: THE ASTHMA CENTER MANUAL**

Understanding Asthma: The Asthma Center Manual is an extensive, 92-page patient education manual written and edited by The Asthma Center specialists.

The manual was written to promote better understanding of the disease process and its treatment. The manual contains important information about how asthma develops, the different types of asthma, medications and the complications of asthma. The section on medications explains how medications work, their potential side effects and how they are used. Understanding Asthma: The Asthma Center Manual is also available on our web site, www.asthmacenter.com.

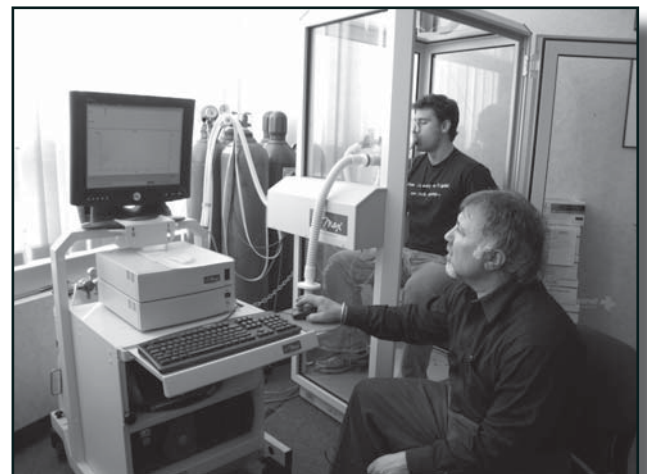


T **THE ASTHMA CENTER WEB SITE (www.asthmacenter.com)**

Our web site allows The Asthma Center specialists to communicate with our patients in a way that puts up-to-date information in their hands. [asthmacenter.com](http://www.asthmacenter.com) is a resource for all sorts of allergy and asthma information. The web site contains Understanding Asthma, our comprehensive asthma manual, medication alerts and recalls, pollen and mold spore counts, information on a broad range of subjects of interest to allergy and asthma sufferers, and information about participation in our current clinical research trials or research protocols.

P **PULMONARY FUNCTION LABORATORY**

We have developed an outstanding pulmonary function laboratory dedicated to the evaluation of asthma, COPD and other lung problems. We use state-of-the-art equipment for patient diagnostic evaluations. Our certified staff is expert in operating this equipment and helping patients to give their best efforts for accurate results. Since much of our therapeutic recommendations are based on pulmonary testing results, we can be assured that these tests are performed under optimal conditions and provide precise results.



PATIENT INFORMATION

OFFICE HOURS

Office visits are by appointment only and every attempt is made to adhere to our schedule. We do not “double-book” patients as part of our scheduling procedure; however, we do accommodate emergency visits, and multiple emergencies on the same day can lead to delays. To ensure a convenient office appointment, it is best to make your appointment well in advance. We ask our patients to give at least 24 hours’ notice for cancellations.

Should you have a non-urgent medical question, please call between the hours of 8:30 a.m. and 4:30 p.m., Monday through Friday. If we are not in the office at the time of your call, your call will be automatically transferred to our Center City Philadelphia office or answering service.

OFFICE PROCEDURES

All appointments must be scheduled. It is best to schedule your appointments well in advance in order to be able to receive a time and date that meets your needs. Therefore, when asked to return for a follow-up visit, please schedule your next appointment before leaving the office. We do not “double-book” patients except for emergencies or other urgent problems.

We are usually able to see patients close to their scheduled appointment times. In order to cut down on unnecessary waiting time, patients who are receiving allergy injections without a doctor’s visit have separate schedules from doctor visit appointments.

We ask that patients not smoke or wear heavy perfumes out of consideration for our asthma/allergy patients. Please do not bring food and drinks into our offices.

We are a group practice, which means each physician participates in the care of each and every patient. You may see any one of the physicians for a given visit. However, if a patient prefers to see a specific physician in the group, the

patient must notify the nurse at the time of the visit, and when possible, the request will be accommodated. We have found our group practice model to be optimal for consistent care, especially when patients have problems at night or on weekends.

AFTER HOURS

One of our specialists is on-call at all times in order to handle our patients’ emergencies or urgent problems.

In case of emergencies, call 267.299.8025. The page operator will contact the on-call physician in our group. If your call is not returned within 15 minutes, please call the operator again. Please have your pharmacy number available. Patients in an HMO should also have discussed their emergency with their primary care physician in case they need to go to the emergency room. In an emergency, patients are requested to contact our doctors and/or go to the closest emergency room (some insurances require prior referral/authorization by your primary care physician).

HOSPITALIZATION

We are on the staff of several area hospitals including Hahnemann University Hospital, Pennsylvania Hospital, Aria Health, Jeannes Hospital, Virtua/Memorial Hospital of Burlington County, and others.

FINANCIAL PROCEDURES AND FEES

Our practice is fee for service for most services and payment is requested at the time of the service. Our business office is very knowledgeable and helpful. They will help process your insurance forms.

Assignment of Medicare benefits is accepted by our practice. The portion of your bill not covered by Medicare is your responsibility, but may be covered by supplemental coverage.

We currently participate in a number of HMO/PPO health plans. Patients with these plans must present proper referrals/authorizations from their primary care physician at the time of their visit. Co-pays are due at the time of your visit. Patients need to review their own medical insurance policy benefits with their insurance company to determine their specific policy coverage.

Our billing staff can try to assist you; however, information about individual policies are not available to our office until after we bill for services rendered and receive specific payment information from your company regarding your individual plan benefit. You will be responsible for all deductibles, co-pays and non-covered services.

MEET OUR PHYSICIANS

The physicians at The Asthma Center are clinicians, teachers and researchers and are on the staff of Drexel University College of Medicine. We have written extensively in professional and lay journals, textbooks, and monographs and frequently honor requests to lecture to other physicians and public groups.

We are committed to continued medical education in order to remain abreast of, and contribute to, the latest advances in our specialty.



Eliot H. Dunsky, M.D.

Associate Professor of Clinical Medicine at Drexel University College of Medicine. Dr. Dunsky graduated from Hadassah-Hebrew University and completed his Allergy and Immunology training at the Hospital of the University of Pennsylvania and the Children's Hospital of Philadelphia. He is board certified in Allergy and Immunology and Pediatrics.

Marc F. Goldstein, M.D.

Associate Professor of Clinical Medicine at Drexel University College of Medicine. Dr. Goldstein is the Section Chief of Allergy and Immunology in the department of Medicine at Pennsylvania Hospital. He graduated from the University of Pennsylvania School of Medicine and completed his Allergy and Immunology training at the Hospital of the University of Pennsylvania and the Children's Hospital of Philadelphia. He is board certified in Internal Medicine, Allergy and Immunology, and Diagnostic Laboratory Immunology.



Donald J. Dvorin, M.D.

Assistant Professor of Clinical Medicine at Drexel University College of Medicine. Dr. Dvorin graduated from Rutgers University School of Medicine and completed his Allergy and Immunology training at Buffalo General Hospital and Children's Hospital of Buffalo. He is board certified in Pediatrics and Allergy and Immunology. Dr. Dvorin is the station director and certified by the American Academy of Allergy, Asthma, and Immunology as a pollen and mold spore counter.

George A. Belecanech, M.D.

Assistant Professor of Clinical Medicine at Drexel University College of Medicine. Dr. Belecanech graduated from Medical College of Pennsylvania and completed his Allergy and Immunology training at the State University of New York at Stony Brook. He is board certified in Internal Medicine and Allergy and Immunology.

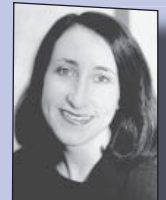


Irene C. Haralabatos, M.D.

Assistant Professor of Clinical Medicine at Drexel University College of Medicine. Dr. Haralabatos graduated from Robert Wood Johnson School of Medicine and completed her Allergy and Immunology training at the Hospital of the University of Pennsylvania. She is board certified in Internal Medicine and Allergy and Immunology.

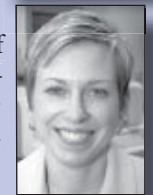
Nancy D. Gordon, M.D.

Assistant Professor of Clinical Medicine at Drexel University College of Medicine. Dr. Gordon graduated from Temple University College of Medicine and completed her Allergy and Immunology training at the Hospital of the University of Pennsylvania. She is board certified in Internal Medicine and Allergy and Immunology.



Heather J. Moday, M.D.

Assistant Professor of Clinical Medicine at Drexel University College of Medicine. Dr. Moday graduated from Tulane University School of Medicine and completed her Allergy and Immunology training at the Montefiore Medical Center/Albert Einstein College of Medicine. She is board certified in Internal Medicine and Allergy and Immunology.



Raquel B. Empedrad, M.D.

Assistant Professor of Clinical Medicine at Drexel University College of Medicine. She completed her Allergy / Immunology training at University of Texas Southwestern Medical Center at Dallas and University of California, Irvine. Dr. Empedrad is board certified in Internal Medicine and Allergy and Immunology.

Juen Kim, M.D.

Dr. Kim graduated from the University of Michigan Medical School. She completed her Allergy / Immunology training at the University of Michigan Hospitals. She is board certified in Allergy and Immunology.



Offices

Center City Philadelphia, PA

Professional Arts Building
205 North Broad Street, Suite 300
Philadelphia, PA 19107
215-569-1111

Society Hill Philadelphia, PA

822 Pine Street, Suite 1D
Philadelphia, PA 19107
215-922-5080

Northeast Philadelphia, PA

2137 Welsh Road, Suite 2B
Philadelphia, PA 19115
215-677-4433

Bala Cynwyd, PA

Suite 140
301 East City Line Avenue
Bala Cynwyd, PA 19004
610-660-0777

Langhorne, PA

Penns Square at Oxford Valley
404 Middletown Boulevard, Suite 305
Langhorne, PA 19047
215-750-7040

Mount Laurel, NJ

Larchmont Medical Center II
210 Ark Road, Suite 109
Mt. Laurel, NJ 08054
856-235-8282

Hamilton, NJ

University Office Plaza II
3705 Quakerbridge Road, Suite 206
Hamilton, NJ 08619
609-689-3080

Forked River, NJ

422 Lacey Road
Forked River, NJ 08731
609-693-5317

Woodbury, NJ

Suite 310
608 North Broad Street
Woodbury, NJ 08096
856-251-9951

The Asthma Center

Physicians

Eliot H. Dunsky, M.D.

Marc F. Goldstein, M.D.

Donald J. Dvorin, M.D.

George A. Belecanech, M.D.

Irene C. Haralabatos, M.D.

Nancy D. Gordon, M.D.

Heather J. Moday, M.D.

Raquel A. Empedrad, M.D.

Juen Kim, M.D.

